

ITCU Software Release v2.6.6

Compared with v2.5.3. Release date: 2023-10-02

General

The new ITCU v2.6.6 comes with one additional language, stability and usability improvements which enable the operator to put different embroidery in queue.

Versions

Software

ITCU Software Package: v2.6.6

Control Software (CTL): v2.5.4

Printer Firmware (HDB): v1.10

Application Software (ICM): v1.20.3

Main Features

- Additional language support (Mandarin).
- Put different embroidery in queue.
 - User Interface updated when coloring next embroidery.
- User Interface change for Perform maintenance.

Other Features

- Updated ITCU notifications.
- Auto-pause timer 1 min.

Fixes

- Improved management of export of large log files.
- Contact fixation movement management.
- Auto-pause management with respect to multi-thread.

Known limitation (new)

- Start-at-stitch option can become disabled (not for the 1st embroidery).
 - Workaround: Refresh needed on print screen. This can be achieved by e.g. clicking network tab and then back to print screen again.

To put an embroidery in queue

[Full operator Manual]

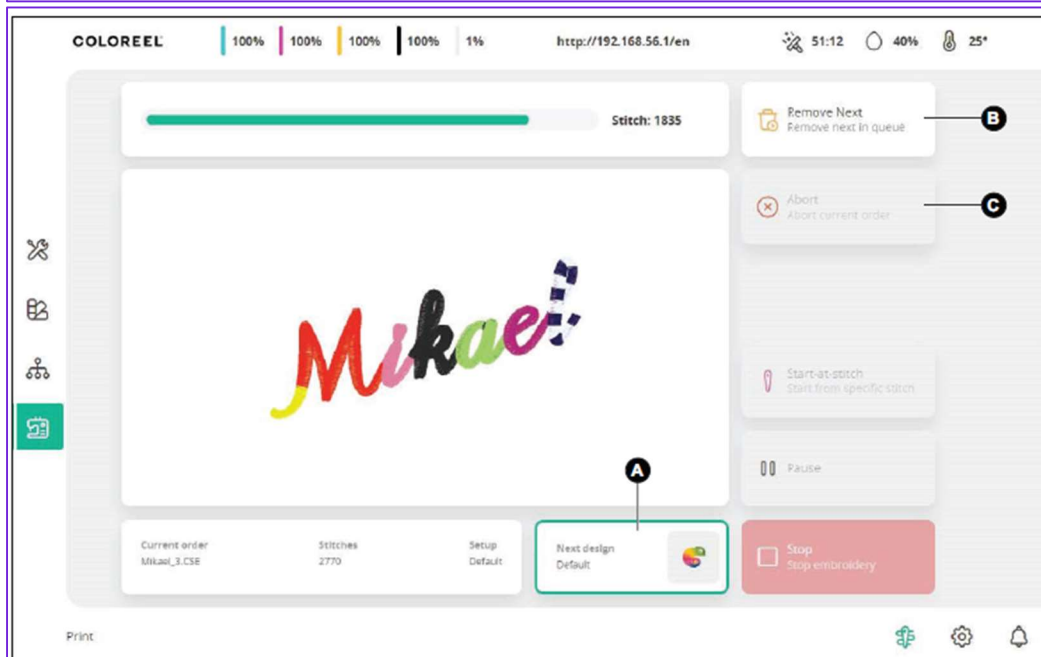
5.6.4 To put an embroidery in queue

The ITCU prints the selected print job again and again until a different embroidery is put in queue. If there is a different embroidery in queue, the ITCU starts the print job in queue while the first print job is completed. This saves the amount of thread that is pulled between each print job.

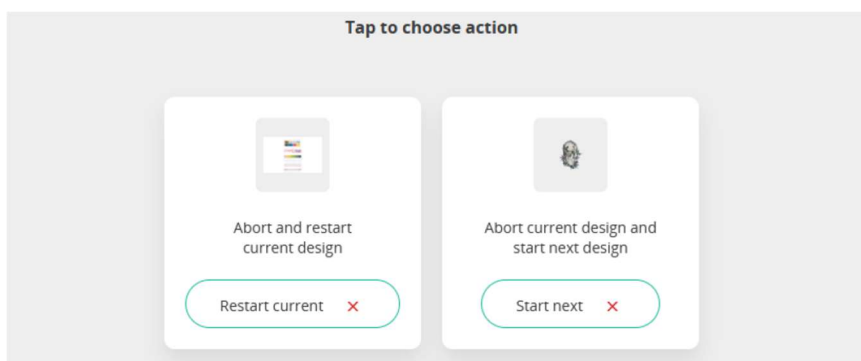
- Pull the thread on the current print job and then select a different embroidery from the operator panel. Refer to *To start a print job* in chapter 5.6.2.
- (A) shows the embroidery in queue. The green border indicates that the ITCU has started to print the next embroidery in queue.



Note: When the active print job is almost completed and the next print job starts, it is not possible to put an embroidery in queue. A warning message shows.



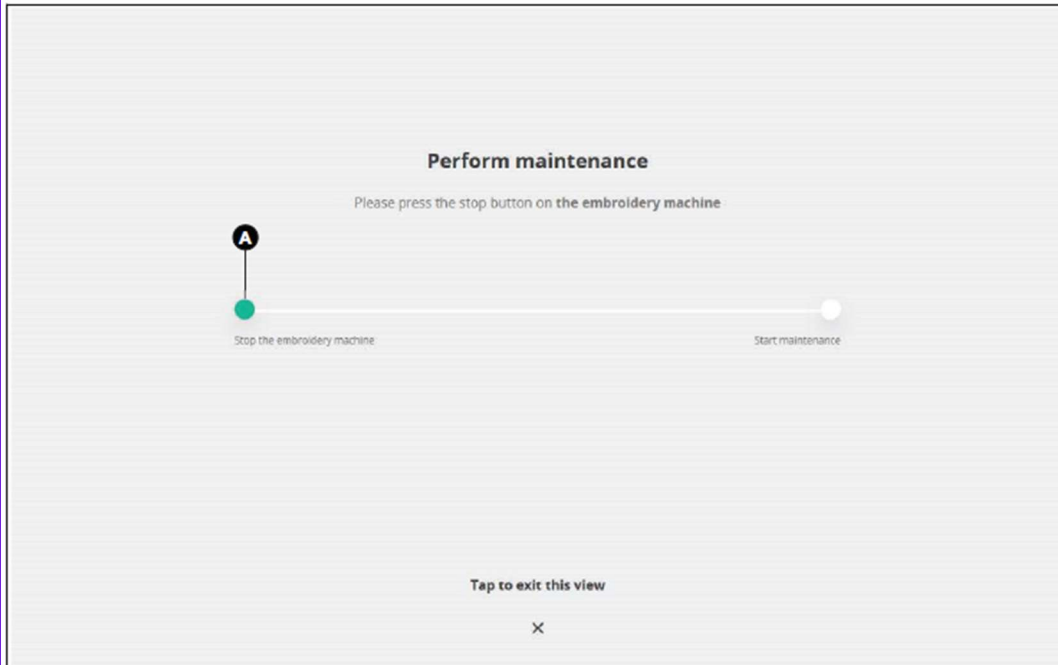
- To remove the next print job in queue, click/tap (B).
- To abort a print job, click/tap (C). A pop up window shows. Click/Tap to restart the print job of the current embroidery, or to remove the current embroidery and start to print the embroidery in queue.



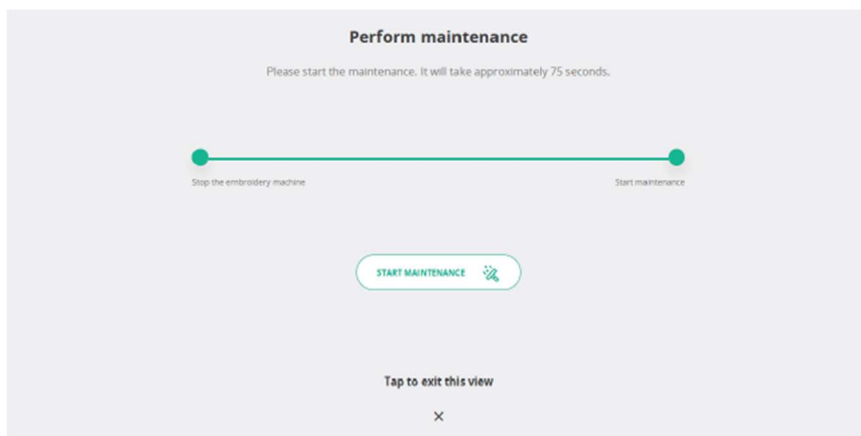
User Interface change for Perform maintenance

[Full Operator Manual]

1. Tap on the *Maintenance timer* symbol to start maintenance manually or wait until the ITCU starts maintenance automatically. Follow the instruction on the screen (A), stop the embroidery machine.



2. Tap on the *Start maintenance* button.
3. Wait while the ITCU is running maintenance.
4. When the maintenance is completed:
 - a. If the maintenance was performed between 2 embroideries, pull the thread and then start the embroidery machine. Refer to *To pull the thread* in chapter 5.6.3.
 - b. If the maintenance was performed in an active print job, start the embroidery machine.



COLOREEL®

Coloreel

Gjuterigatan 9

553 18 Jönköping

Sweden

www.coloreel.com

Known limitations (old)

MINOR:

- Open Cartridge door during maintenance procedure can make the unit become inoperable and require hard reset or need to call service technician.
 - Workaround: Ensure that cartridge door is always closed during maintenance procedure and printing (stop print before open cartridge).
- There is no clear indication to the user that the CCP setup is trained correctly or that it is suitable for the current garment embroidered on.
 - Workaround: Analytics/Embroidery can be used for evaluation if the CCP setup was trained properly (should be indicated by green and not yellow status for that embroidery).
- Sometimes operator panel (and web) does not display ink status, temperature and embroidery files.
 - Workaround: Logout and login again then the display is correctly updated
- The print screen becomes temporary incorrect when returning from auto-pause during coloring next embroidery and for manual thread pull.
 - Workaround: Be aware of incorrectness and continue operating
- For older ITCU HW (CTL) the LED stripe is always green since it cannot be controlled in old HW.
 - Workaround: Awareness as operator.
- Currently the ITCU does not have a graceful behavior for the display during shutdown.
 - Workaround: Operator Awareness.
- Opening the cartridge door does not stop the print. A maintenance window appears and the operator and stop is disabled.
 - Workaround: Ensure that cartridge doors is closed during printing. When need to change ink cartridges ensure that you stop printing (by pressing stop).
- Export of CSE and DST sometimes fails but is indicated as successfully. The file is created but is 0 kB in size.
 - Workaround: Re-try operation or perform action twice every time.
- Display of stitch count is 0 after performed needed maintenance during an embroidery. When starting embroidery machine the correct stitch number is displayed.
 - Workaround: Awareness by the operator