

Coloreel Studio Software Release v1.5.14

Compared with v1.4.8

Release date: 2023-02-22

General

The new Coloreel Studio SW v1.5 introduce support for multithread design. Improved stability and usability mainly related to control of swatches and library. The performance is also improved.

Software version

Coloreel Studio v1.5.14

Main Features

- Multithread support
- Stability, usability, and performance improvements

Other Features

- Improved thumbnail handling
- Dialog from menu to show keyboard mappings
- Link to release notes page from menu

Fixes

- When the color in a multiple selected section was changed, all the selected sections got the same color.
- Performance improvements during CCP min and max

Known limitations and issues

- For update stitch SW do not support adding or removing section in DST file when using a mix of Coloreel and standard thread (multithread). User can still resize existing sections. Recommended is to save and close file before editing after executing update stitch.
- The section delimiter can sometimes quickly skid to the end which changes the active editing.
- It's possible to do a "Copy-Paste" from a Standard Thread-swatch to a Coloreel thread swatch. The thread is still Coloreel thread but displayed incorrectly.
- The list of used files in menu "File->Open Recent" is not always updated with latest used file(s).
- When needle is changed in the design you can sometimes see long stitches when using standard thread.
- Solid Colors cannot be selected from Library for standard thread
- Copy Paste of Gradient Swatch does not include the "Color Sampling mode". Workaround is to use Drag-and-Drop instead.
- Not possible to search for colors with space in the name

COLOREEL[®]

Coloreel

Gjuterigatan 9

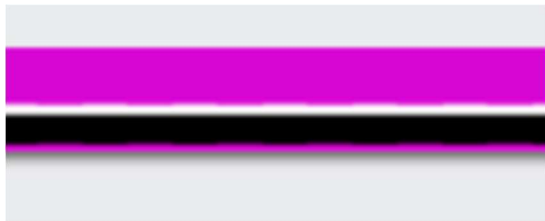
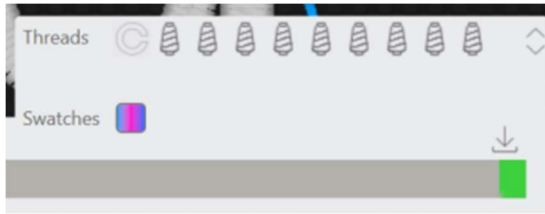
553 18 Jönköping

Sweden

www.coloreel.com

Examples of UI changes

Multithread:



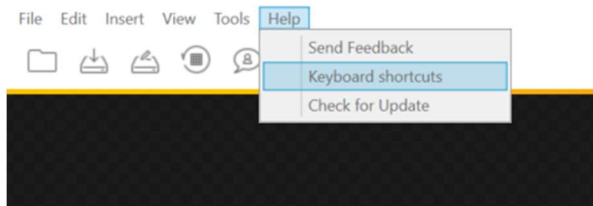
COLOREEL®

Coloreel

Gjuterigatan 9
553 18 Jönköping
Sweden

www.coloreel.com

Keyboard mapping dialog:



A screenshot of the 'Key Mappings' dialog box. It features a table with two columns: 'Keyboard Shortcut' and 'Description'. The table lists various shortcuts and their functions, including actions like 'Clear selection marker', 'Delete selected section', 'Copy swatch/instance', and 'Move selected section one stitch right'. A 'Close' button is located at the bottom right of the dialog.

Keyboard Shortcut	Description
Esc	Clear selection marker.
Delete	Delete selected section.
Alt + C	Clear all sections.
Alt + X	Split section at marker.
Alt + Z	Split section at mid point.
Shift + Left	Select previous section.
Shift + Right	Select next section.
Ctrl + C	Copy swatch/instance.
Ctrl + V	Paste swatch.
Ctrl + Shift + V	Paste swatch instance.
Ctrl + Z	Undo.
Ctrl + Shift + Z	Redo.
PageUp	Move selected section one stitch right (not working).
PageDown	Move selected section one stitch left (not working).
Ctrl + PageUp	Move selected section ten stitches right (not working).
Ctrl + PageDown	Move selected section ten stitches left (not working).
Ctrl + Shift + Right	Resize selected section one stitch right (not working).
Ctrl + Shift + Left	Resize selected section one stitch left (not working).
Ctrl + Shift + Alt + Right	Resize selected section ten stitches right (not working).
Ctrl + Shift + Alt + Left	Resize selected section ten stitches left (not working).